

Presentation document: farm and agricultural land in Braila

Edit/Nr 20240903/A



1. The city of Braila and the province Braila

The farm is located in the province of Braila.

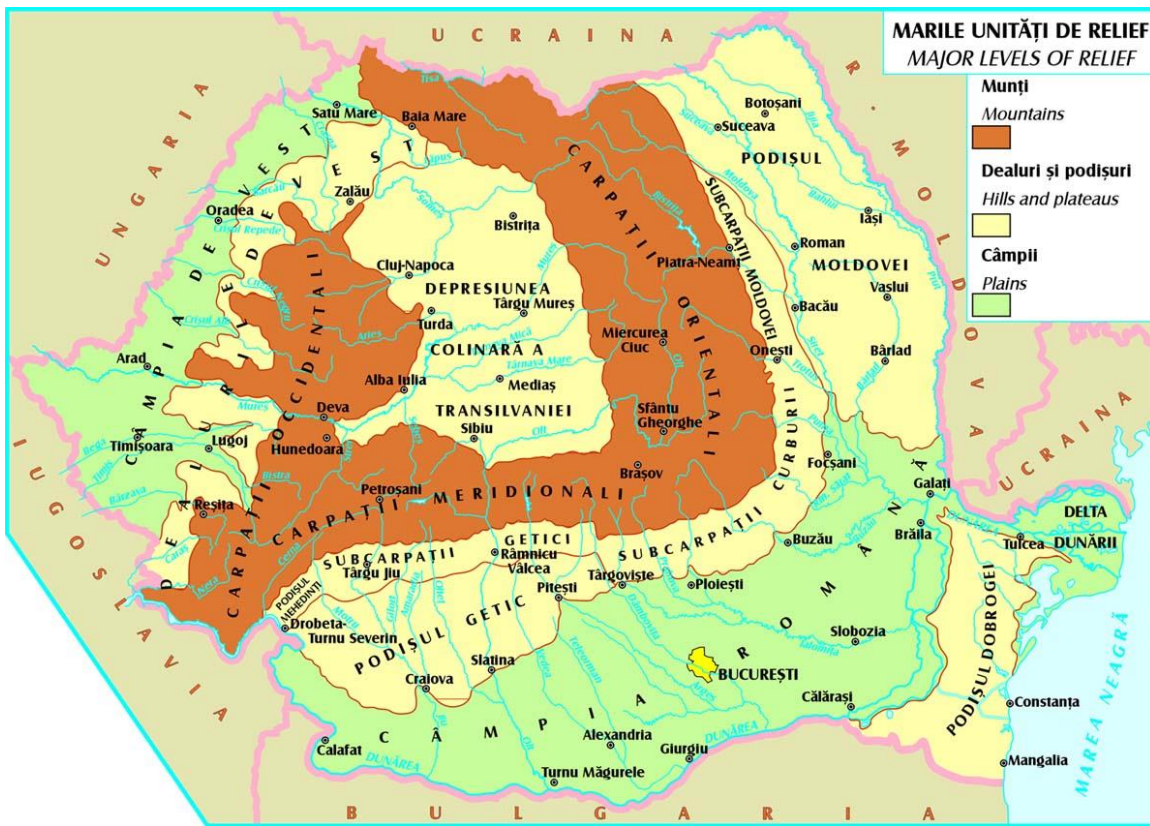
The city of Braila has been the European cultural capital in 2021. Braila is a city in Muntenia south-eastern part of Romania, a port on the Danube, in the close vicinity of Galati. Climate is temperate continental, with a mean temperature of 11.1°C, hot, dry summers and cold winters. The waterway – the port of Braila, located at 171 km from the Black Sea, made contact with the main seaports and waterways .

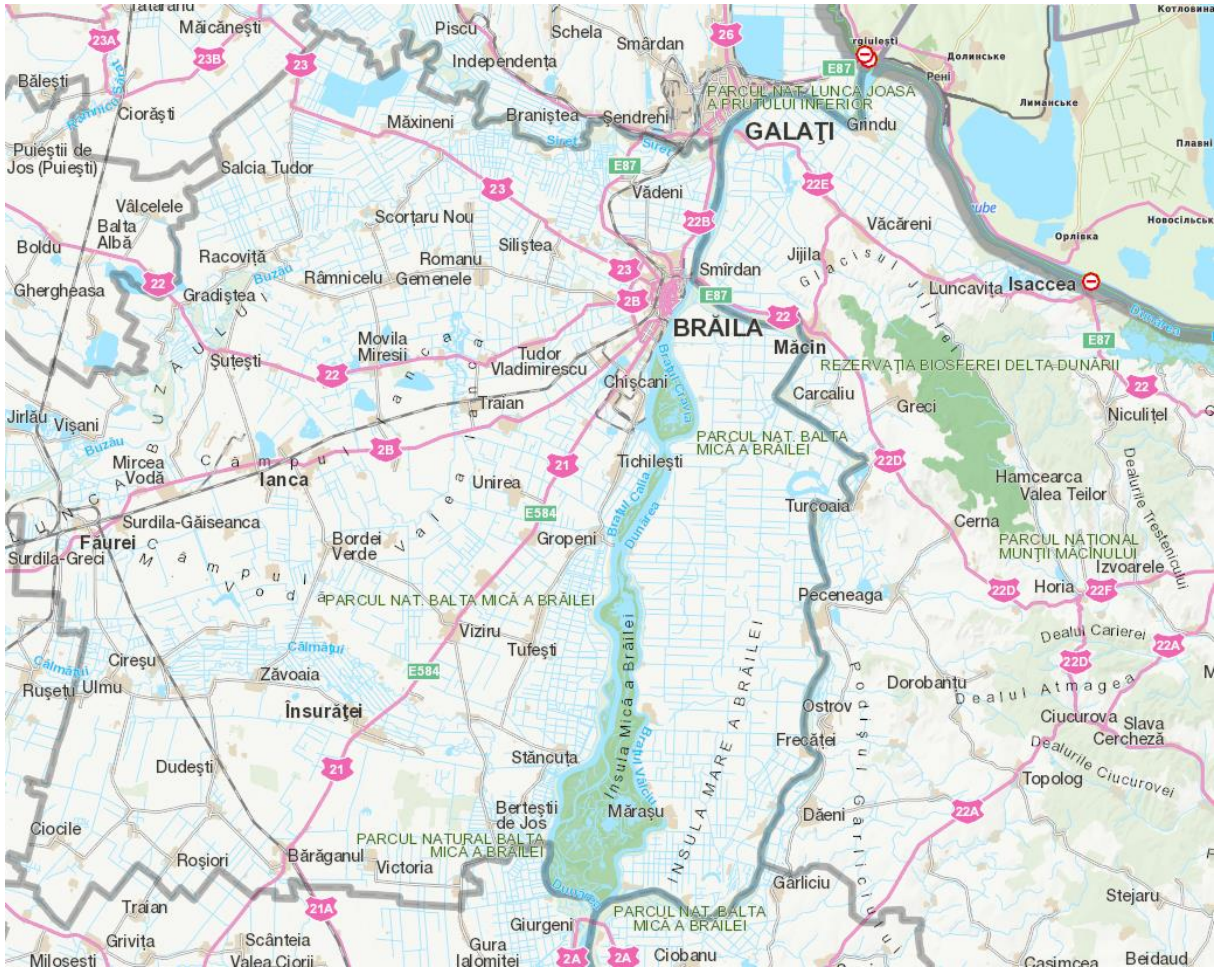
The farm has excellent land quality and because of the position it is less affected by drought. As it is close to the Danube river the water level is high and easily accessible for irrigation.



copyright © PBS Worldwide

www.pbsworldwide.com





2. Investment proposal

- Agricultural land and a building and offices on 3 hectares of land (30.000 sqm) suitable and construction allowed on the entire surface.
- There is a guard house at the entrance and a fence around the entire facility (30.000 sqm) .
- The building is 2250 sqm
- Surface agri land 80 hectares + Till 800 hectares on demand
- The transfer of the property through the transfer of 100% of the shares as a share-deal.
- The shareholder is an international investment holding.
- The transfer will be done with the entire guarantees for the share deal
- A team fully capable to sustain and continue the activity.

- Access to the entire documents by signing of a confidentiality agreement NDA via a data-room

Budget : 1.840.000 euro with 80 hectares of land

Building only: 975.000 euro

Extra 104.67 hectare compact land (comasat) at 1.050.000 euro

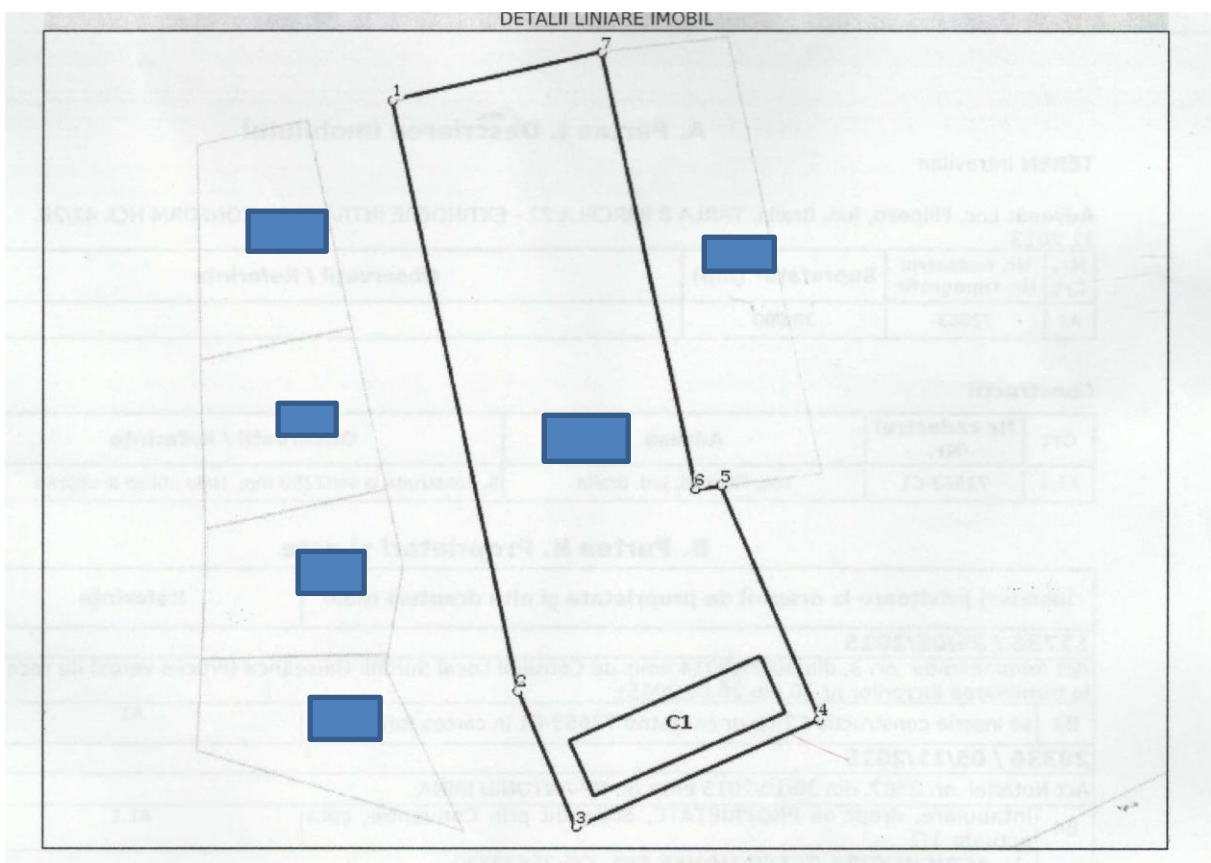
More land can be provided on demand till 800 hectares

The building can be sold separately on demand !

Contact: freddy.jacobs@pbsworldwide.com or call +32 478 331 799 (exclusive sales rights)

3. Building & office

The building is on 30.000 sqm of land intabulated in the cadaster of Romania.
The constructed area is 2250 sqm.



Link to video: <https://youtu.be/ngMVwT8Rbqc>















































Guard house

4. Employees

The team is stable and experienced, certain employees being present since the beginning of the activity. The team is capable to ensure a healthy functioning of the company in complete autonomy from accountancy to operations and land purchase.

